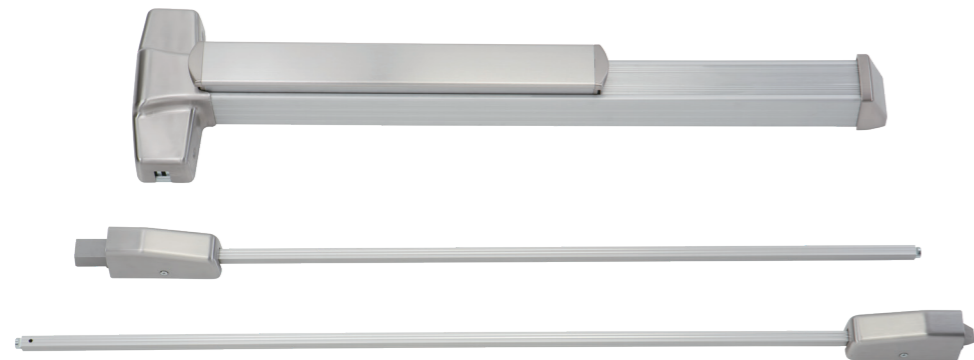


# 9000 series

## Vertical Rod Type



### Certifications

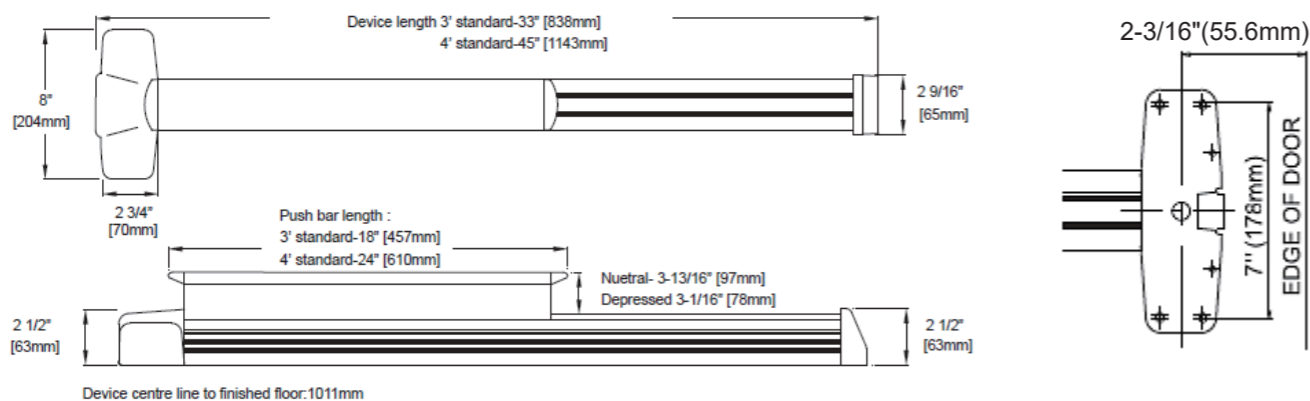
Structure and performance of 9000 series are certified

- ANSI A156.3 – Grade 1
- UL/cUL listed as panic hardware (9100V/9200V/9100V-AD/9200V-AD) and 3 hours fire rated exit hardware (F9100V/F9200V)

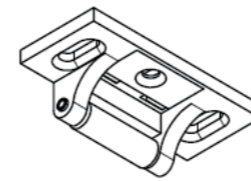
### Specifications

<b>Door width</b>	3' standard for door width of 2'4" to 3' (711mm to 914mm) 4' standard for door width of 2'10" to 4' (864mm to 1219mm)
<b>Door thickness</b>	1-3/4" (44mm) and 2-1/4" (57mm) thick of metal or wood door
<b>Fasteners</b>	Furnished standard with sheet metal & machine screws. Sexnuts bolts supplied standard for fire rated exit device.
<b>Latch Bolt</b>	9/16" (15mm) throw, deadlocking design
<b>Strike</b>	For 3/4" (19mm) stop / Fire rated -For 7/8"(22.5mm) stop
<b>Reversible</b>	Non-handed, reversible for all functions and trims
<b>Stile</b>	4-1/4" (108mm) minimum
<b>Cylinders</b>	For trim, lever
<b>Dogging</b>	Hex key dogging on non-fire labeled device (9000R only)
<b>Quiet damper</b>	A fluid damper reduces the greatest noise associated with exit device operations

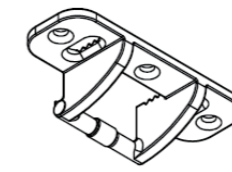
### Mounting Position



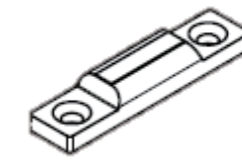
### Top Strikes



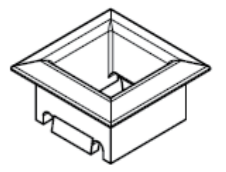
ZEB -RSA04 -E9E102428  
used with 9000V



ZEB -VFB0A -E9E201528  
used with F9000V (fire rated)



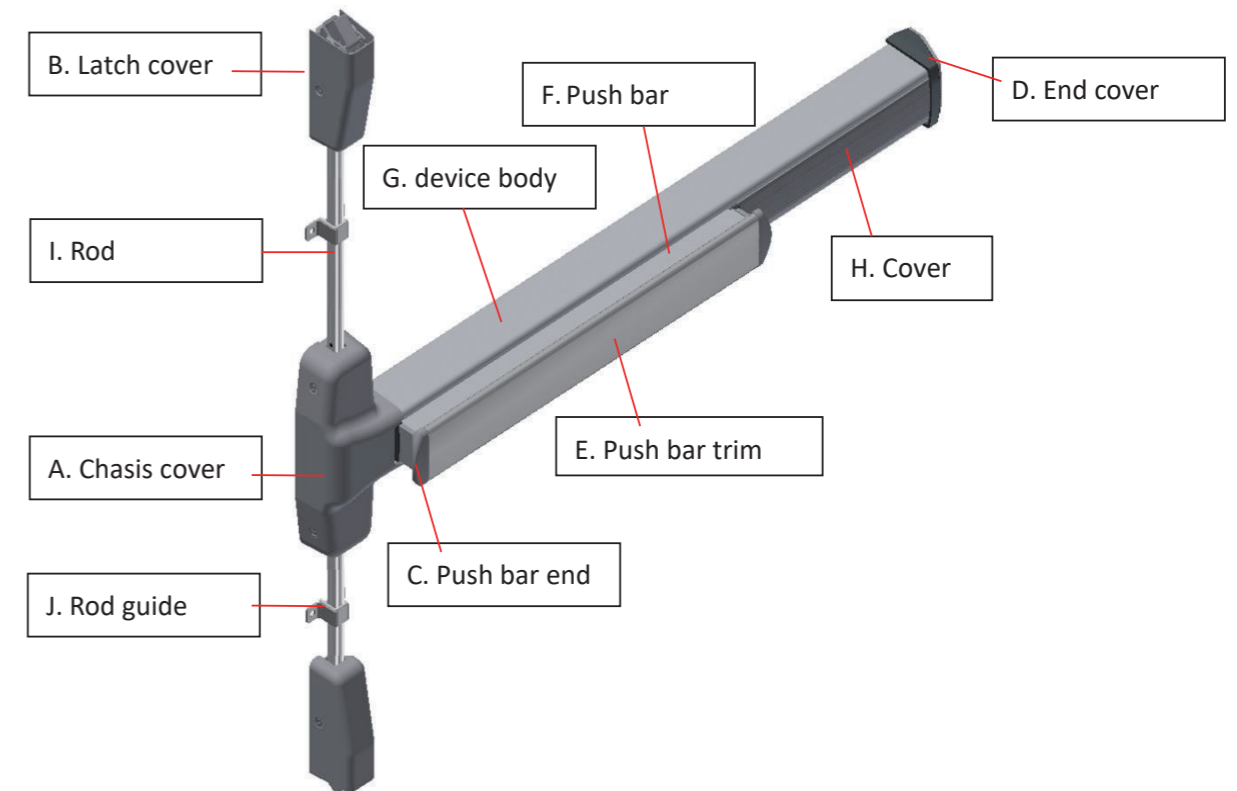
ZEA-VS00E -E9E201635  
used with 9000V



ZEB -VFB0A -E9E201528  
used with 9000V/F9000V (fire rated)

### Bottom Strikes

### Standard Finishes



US no.	Description	A / B	C / D	E / J	F / G / H / I
US28	Aluminum anodized	Paint	Paint	Satin stainless steel,630	Anodized
US32D	Satin stainless steel	Satin stainless steel,630	Plated	Satin stainless steel,630	Anodized
313	Dark bronze painted	Paint	Paint	Paint	Paint
US26D	Satin chrome plated	Plated	Plated	Satin stainless steel,630	Anodized

Certified finishes: US32D/US26D (other available finishes upon request & discussion)  
Information in this catalog is subject to change without notice